

EYE3-MOBILE LITE (1-CHANNEL)



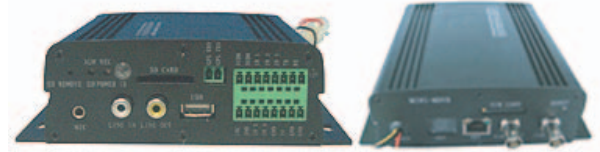
Introducing EYE3-Mobile Lite

Eye3data, a leading provider of digital surveillance technologies announces EYE3-Mobile LITE a single-camera mobile DVR solution designed for Taxi-cabs, Limousines, Service/Utility trucks, Ambulettes, Passenger/Handicap vans and Day-care/Adult-care buses.

Eye3-Mobile is a compact, easy to install and cost-effective solution. This Linux based system records video at 30 FPS (frames per second) using H.264 compression and stores video on a removable SD Card (1G to 8G) in CIF (352x240), HD1 (720x240) or D1 (720x480) resolutions. The system also records audio on a single channel.

The system runs on a standard 12V battery and can be configured to record only when the ignition is turned-on and auto-shutdown delay when system is turned-off. Eye3-Mobile LITE has built-in GPS, an RJ45 interface for Network connectivity and 2 USB ports to download data to a laptop or any external storage device.

Combined with a powerful Client "Analysis" software and Central Monitoring software, the EYE3-Mobile LITE is by far the most advanced Mobile DVR Solution available in the market.



Product Features

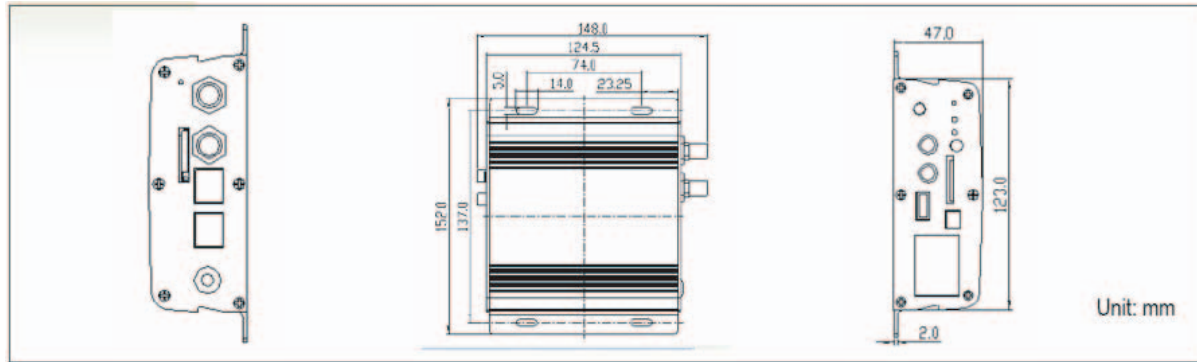
- ◆ Dual streaming transfer provides the excellent performance
- ◆ Support powerful CMS (Central Monitoring System) for superior online viewing / tracking
- ◆ Plug-and-play from SD recorded card, easy to playback in PC side
- ◆ Stand alone NON-PC embedded operating system (RTOS) provides maximum stability
- ◆ H.264 Wireless Transfer, provides superior video transfer quality (up to 7-8 fps based on 60 Kbps)
- ◆ 1Channel video input and 1channel video output
- ◆ 1-30 fps adjustable

Specification

| | | |
|-------------------|---------------------|--|
| System | OS | Linux (providing standalone stable operation system) |
| | Operation Interface | Hand-held, IR controller with On-Screen Display (OSD) for all operations of the MDVR |
| | Storage | SD card (Storage is optional but not be less than 1 GB) |
| | Signal System | NTSC/PAL |
| | Input Voltage | 12 V/1 A |
| Video | Camera Input | 1/4 camera |
| | Display | 1/4 Video Windows Screen |
| | Image Quality | 8 – Level Adjustable |
| | Fwd/Playback speed | ×2, ×4, ×1/2, ×1/4 |
| | Stream Standard | ISO 14969 |
| | Record Resolution | CIF(352×288 pixels for PAL, 352x240 pixels for NTSC), 1/2D1 720×288 pixels for PAL, 720 x 240 pixels for NTSC D1 (720×576 pixels for PAL, 720 x 480 pixels for NTSC) |
| | Image Compression | 4.8K-256KB/s |
| | Max FPS | 25 / 30 fps (25/30 fps/CH at CIF, 12.5/ 15 fps/CH at HD1, 6.25/7.5 fps/CH at D1) |
| | Display Res. | TV monitor 720×576 / 720x480 pixels (D1) |
| Audio | Audio Input | 1 mono |
| | Audio Output | 1 mono |
| | Audio Compression | AMR |
| I/O Interface | TV-OUT | 1 output, 1 input |
| | LAN | 1(RJ-45) 10M / 100M Ethernet connector |
| | USB | 2, support USB Technology (USB1.0) |
| | Serial | RS-232×2 |
| Network | Protocol | TCP / IP |
| Alarm | Input | 3 I/O alarm inputs, 3 alarm outputs |
| | Multi-mode | Auto-reset after power-break, auto-alarm when missing signal input, Camera Cover alarm |
| Power Requirement | Ignition Switch | Device operate once ignition power on/ auto shutdown delay after ignition power off |
| | Power Consumption | Average 15W |
| | Power Adapter | 12 V DC. Typical 12 V DC @ 5A, 24V DC@3A |

Technical Specification

Dimension



| | | |
|--------------------------|------------------------|---|
| Physical Characteristics | Height | 47 mm (1.85 in) |
| | Width | 148 mm (5.83 in) |
| | Depth | 127 mm (5 in) |
| | Weight | 1.5 kg (3.3 lb) |
| Value-added Function | Record Mode | Manual, continuous, schedule, event, pre-event recording |
| Others | Storage Mode | SD card (Storage is optional but can not be less than 1 GB) |
| | Time Clock | Built-in clock, perpetual calendar |
| | GPS Function | Optional for built-in module with GPS antenna |
| | Wireless Communication | EDGE/GPRS/CDMA wireless transmission |
| | Time Synch | GPS Time Synch |
| Environment | Operating Temperature | -40°C -40°C (W/O HDD) , 0~40°C (W HDD) |
| | Relatively Humidity | 80% |
| | Vibration resistance | < 10 Grms |

Ordering Information

| MODELS | | | |
|---------------|---------------|--------------|--|
| MODEL NUMBER | CAMERA INPUTS | SCREEN SPLIT | HDD SPACE |
| E3D-MMDR-1000 | 1 | 1 | Optional (but can not be less than 1 GB) |

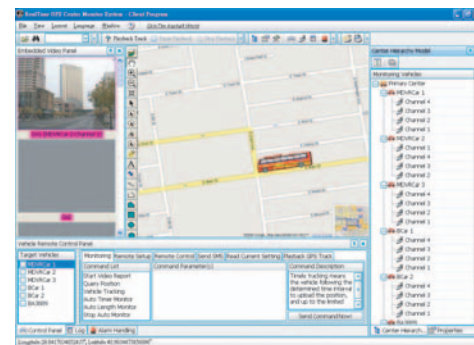
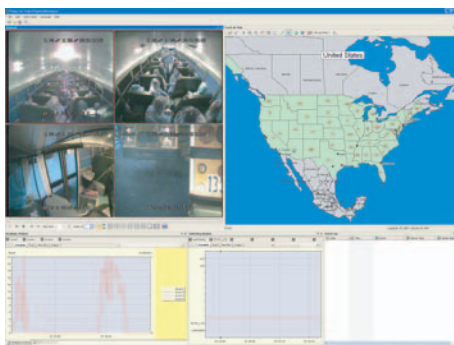
Optional Items

| OPTIONAL ACCESSORIES | |
|----------------------|--|
| MODEL | DESCRIPTION |
| MDR-MDS-G | Extra Removable HDD cast, easy to download |
| PS | /upload via USB |
| MDR-HHC | Extra Remote Handheld Controller |

Software Support

| Model | Central Monitoring System (CMS) | Remote Management Software (RMS) | Auto-Download System (ADS) | Multi-media Configuration Management Tool (MCM) | Playback Analysis Software |
|---------------|---------------------------------|----------------------------------|----------------------------|---|----------------------------|
| E3D-MMDR-1000 | ✓ | ✗ | ✗ | ✗ | ✓ |

Video Analysis Application



- Analysis Dashboard Quad View (Video, GPS, Speed, Events)
- Ability to play Video and/or Events downloaded from Eye3-Mobile
- Import custom map of the county to view exact location of vehicle
- Driver Behavior Management using Inertia Sensor Output
- List of all sensor driven events
- Video Play synchronized with Audio and other Text Display
- Export images to .bmp file

- CMS (Central Management Software) allows live monitoring of vehicles
- Provides exact location of vehicle using built-in GPS software
- Instant Alarm notification. Video is displayed when alarm is triggered