

EYE3 Fixed Dome Camera

EYE3-DM Series



Models: DM-550-3XA, DM-550-3X, DM-550F, DM380F

Features

- SONY 1/3" Super HAD High Resolution Color CCD
- High Resolution of 550TV Lines
- New DSP Chipset (Built-in Micom)
- Day&Night Capability with High Sensitivity of 0.002Lux
- Wall or Ceiling Mounting through internal 3-Axis camera bracket
- Varifocal Lens (4.0-9.0mm)
- Hard Disk Saving with DNR(Digital Noise Reduction) Technology
- Excellent Auto Tracking White-Balance
- Easy operation by On Screen Display
- Extra Video out
- Optional Dual voltage(AC24V/DC12V) Support.

Dome Mount Brackets

SPECIFICATIONS

Model	WM-120	WM-100	CB-100G
Construction	ABS plastic		Aluminum, Steel
Dimensions (mm)	85 x 144 x 175	80 x 128 x 160	129 x 296
Weight	190g	150g	650g



SPECIFICATIONS

ITEM	NTSC	PAL
Effective Pixels (H x V)	768 x 494 (380K pixels)	752 x 582 (440K pixels)
Scanning System	525 Lines 2:1 Interlace	625 Lines 2:1 Interlace
Scanning Frequency	15.734KHz (H), 59.94Hz (V)	15.625KHz (H), 50Hz (V)
Lens	4.0 ~ 9.0mm Varifocal Lens (DCNV series) 3.7mm Fixed Lens (DCN series)	
Resolution	More than 380 TV Lines : Standard resolution model More than 550 TV Lines : High resolution model	
Shutter Speed	1/60 ~ 1/100,000 sec	1/50 ~ 1/100,000 sec
S/N Ratio	More than 50dB (AGC off)	
Sync. System	INT/LL Selectable	
Min. Illumination	Color : 0.3Lux @ F1.2, B/W : 0.002Lux : High resolution model Color : 0.1Lux @ F1.2 : Standard resolution model	
White Balance	ATW / AWC / Manual (1,800 ~ 10,500K)	
Video Output	VBS 1.0 Vp-p (75ohm Load)	
Power Supply	DC12V (10.2 ~14.5 V) / AC24V (22.0 ~ 26.0V)	
Power Consumption	230mA (AC24V), 200mA (DC12V)	
Operating Temp.	-10 C ~ +50 C	
Humidity	30% ~ 90% RH	
Construction	Acrylic dome cover/ ABS body	
Certification	CE, FCC, RoHS	

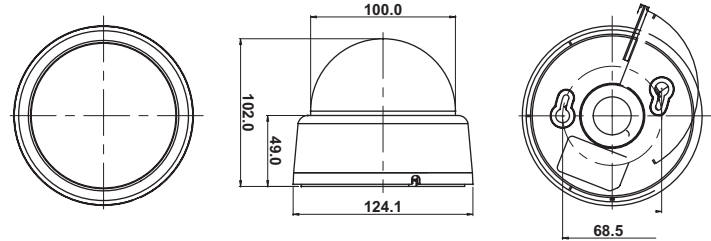
Model Selection

Model	Remarks
DM-550-3XA	1/3" SONY Super HAD, Day & Night, Plastic Ring 2.9~10mm Varifocal Lens, 550TVL, built-in Micom DSP chip4" (100mm) Dome, 3-axis Gimbals, DNR, OSD menu - Dual Voltage, extra Video Out
DM-550-3X	1/3" SONY Super HAD, Day & Night, Plastic Ring 2.9~10mm Varifocal Lens, 550TVL, built-in Micom DSP chip5" (120mm) Dome, 3-axis Gimbals, DNR, OSD menu - Dual Voltage, extra Video Out
DM-550F	1/3" SONY Super HAD, Day & Night, Aluminum Metal Ring 3.6mm Fixed lens, 550TVL, 4" (100mm) Dome, 12VDC
DM-380F	1/3" SONY Super HAD, Plastic Ring, Economical 3.6mm Fixed lens, 380TVL, 4" (100mm) Dome, 12VDC DC12V/AC24V

DIMENSIONS (mm)

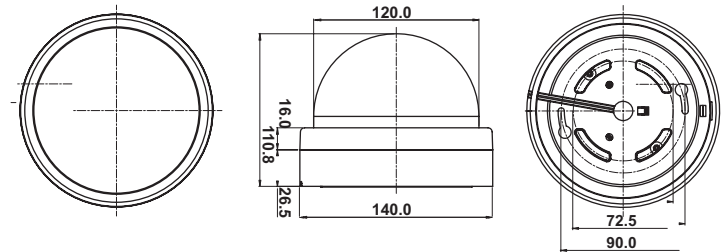
DM-550-3XA

124(W) x 102(H) mm / 290g



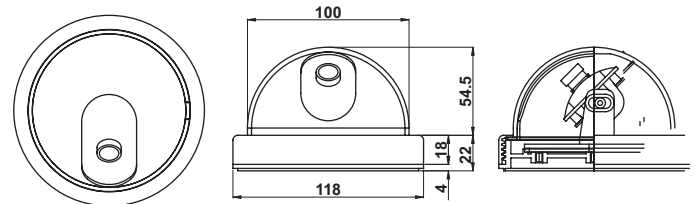
DM-550-3X

140(W) x 111(H) mm / 430g



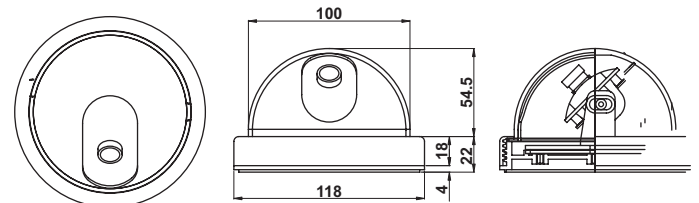
DM-550F

118(W) x 76(H) mm / 300g



DM-380F

118(W) x 76(H) mm / 300g



* Design and specifications are subject to change without notice.